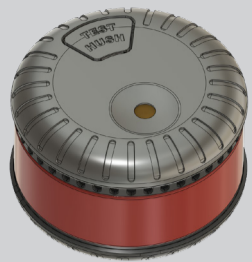


USER MANUAL

Deltronic



Battery operated optical smoke alarm DS105, Art no: 10156, 5-year battery

Please read the entire user manual before use and save it for future reference. We reserve the right for any errors in the text or images. If you have any queries, do contact our office.

Product overview

DS105 is a photoelectric (optical) type of smoke alarm, approved according to EN14604:2005/AC:2008, the latest European fire alarm standard. The unique photoelectric sensing chamber is particularly sensitive to slow smoldering fires that typically occur in living rooms, bedrooms and hallways. At the same time, the device is resistant to disturbing false alarms.

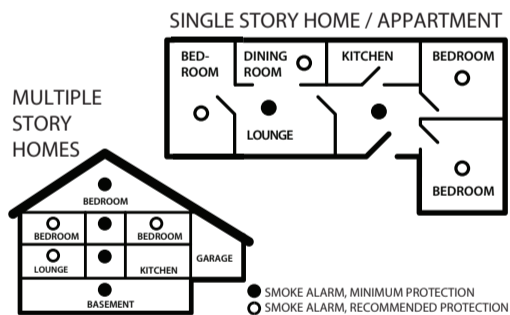
Product Features

- Battery operated with 2 pcs of replaceable AAA alkaline batteries. (~ 5-years operation)
- Approved to EN14604:2005/AC:2008
- Unique X-shaped detection chamber.
- Bespoke software maximizes detection ability and false alarm rejection.
- Red LED flashes approximately every minute confirming unit is receiving power and ready to detect fire conditions (stand-by mode).
- Low Battery Warning - Smoke alarm emit one click every minute.
- Test Button for ease of use, tests sensitivity, circuitry, battery and alarm sounder.
- Loud piezoelectric sounder ≥85dBA@3m automatically resets when the hazardous condition has left the smoke chamber.
- Alarm HUSH, postpone nuisance alarms 10min.
- Approved for use in Leisure Accommodation Vehicles.

Location of smoke alarms

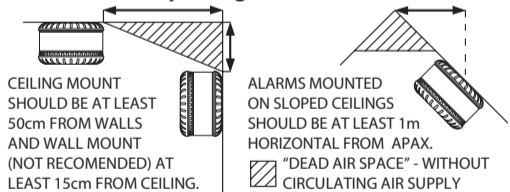
The life of this smoke alarm can be significantly reduced by adverse environments, incorrect location and a failure to regularly clean and maintain the device according to the enclosed instruction. This may cause the alarm to malfunction and may invalidate your warranty.

Recommended locations for smoke alarms:



Now when we charge mobile phones and other products in our bedroom, we strongly recommend one smoke alarm per bedroom, at least when you sleep with the door shut!

Restrictions in placing smoke alarms:



Avoid following locations!

1. Do not install/mount near fans or extractors, these can blow/pull smoke away from unit.
2. Do not install in or near high humidity areas such as showers, bathrooms or kitchens where humidity levels exceed 85%RH or the room temperature exceeds 40°C or fall below 0°C. This may cause nuisance alarms and damage the detector over time.
3. Avoid dead zones, these may prevent smoke reaching the alarm, see above picture.
4. Do not install in insect infested areas.
5. Do not install in areas subjected to heavy concentrations of cigarette smoke that will cause nuisance alarms and sooner or later contribute to contaminate the smoke alarm sensor.
6. Do not install smoke alarms in kitchens, boiler rooms and garages where fumes and dust may cause nuisance false alarms.
7. Do not install on poorly insulated walls and ceilings where cold air boundary layers could prevent smoke reaching the alarm.
8. Do not install near objects that could prevent smoke and heat reaching the alarm.
9. Do not install within 1,5m of fluorescent light fitting that could trigger nuisance alarms.

Details on alarm placements

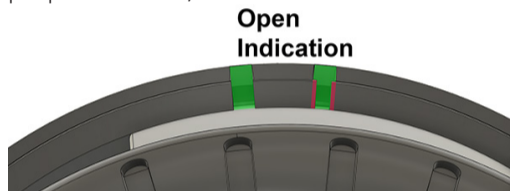
1. At least one smoke alarm should be installed along the escape routes on every floor.
2. If ceiling mounting is impractical, smoke alarms may be installed on walls provided that the room is no longer or wider than 10 metres and that the area does not exceed 60m² and:
 - The detection element is within 15-30 cm below the ceiling at maximum.
 - The bottom of the detection element is above openings such as vents, doors and windows.
 - Smoke alarms are not mounted close to or above heaters or air-conditioning vents.
3. Where smoke alarms are located in a hallways, corridor or landing, the smoke alarm should be less than three metres from any bedroom door to assist audibility behind closed doors.
4. No point on the ceiling in any room, hallway or corridor should be further than 7.5 metres from any smoke alarm.
5. To give the earliest warning of a developing fire, smoke alarms should be installed in as many rooms of your home as possible.

Choice of installation

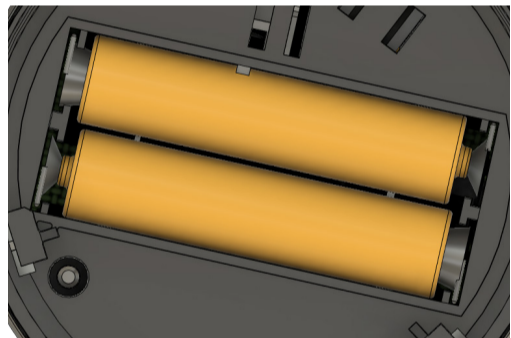
There are two ways of fixing the device to the ceiling, use the double adhesive tape pad or the bi-packed screws and anchor plug in combination.

1. Double adhesive tape installation:

When using double adhesive tape, make sure that the ceiling surface is dry, flat and free from grease, remove the protective foil from one side of the double adhesive tape pad, mount the double adhesive tape pad onto the smoke alarm surface marked "TWIST TO OPEN", gently rub on the double adhesive tape pad so you get a good wetting towards the plastic. Remove the LID with the double adhesive tape pad mounted from the smoke alarm by aligning the "Open Indicators" as per picture below, then remove the lid.



Install the batteries into the battery compartment by following the instruction label so that the polarisation with + and - will be correct.



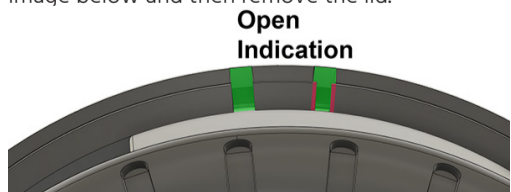
When the batteries are in position close the unit by aligning the "Open indicators" and gently twist/rotate the two pieces together around 10 degrees.

Please note that you cannot close the device without first installing batteries inside!

Now remove the protective foil and place the smoke alarm into the ceiling, press and hold for 30 seconds before you release the pressure, this to let the foam in the adhesive tape pad to form after the surface structure in the ceiling. When done, continue with **Test the smoke alarm** section.

2. Screw and anchor plug installation:

Select the desired location, follow the advice as per above. Remember to ensure that the selected surfaces do not contain any hazardous materials like asbestos, electrical wires, water pipes or similar. Be sure to use protection and safety precautions when drilling, suitable protective equipment may be eye and ear protection. Attached screws & plugs are suitable for use in wood (only screws) and if plasterboard or concrete (in combination with anchor plugs). Remove the cover marked "TWIST TO OPEN" from the smoke alarm by aligning the "Open Indicators" as shown in the image below and then remove the lid.



Mark with a pencil using the hole structure in the lid and drill holes with the appropriate drill bit. The holes in the cover can be pre-drilled to facilitate an easy assembly.



Secure the bracket in the ceiling by means of the screws and anchor plugs. Install the batteries as previously explained, when the batteries are in position close the unit by aligning the "Open indicators" and gently twist/rotate the two pieces about 10 degrees.

Please note that you cannot close the device without first installing batteries inside!

When done, continue in the next section.

Test the smoke alarm

Press the test button shortly to test the smoke alarm. The smoke alarm should sound three times with a flashing red light and then return to stand-by mode. After testing, check that the red light flashes approximately every minute. Test the alarm once a week to ensure correct operation. **WARNING! Use ear protection when testing, high noise above 85dBA!**

Note! The test button provides a full test of the smoke alarm. Do not try to test the alarm using heat, smoke or naked flame as damage could occur to the unit and the surroundings.



User Information

Protect your home against fire!

Seek out information on the www.msb.se/en homepage, search on the word "fire protection" to immerse yourself in the subject. This information is free of charge and identifying potential fire risks in and around your home.

Preventive actions:

- Set up an escape plan and decide an assembly point in a safe area away from the building.
- Practice how to act during a real fire.
- Is there any fire fighting equipment, where is it and who can use it properly?
- Who is doing what? Is it possible to address different areas of responsibility?
- Don't leave candles unattended, don't handle recently put out ashes from fireplace or bonfire recklessly, use metal vessel and place outside away from combustible material!
- Do a health check on electrical appliances and cables, don't overload junction boxes.
- Keep matches and lighters out of reach of children.
- Do not store flammable or explosive liquids near heat sources.
- Be careful of flammable textiles/curtains near windowsills in combination w. candlelit tables.
- Please complete your fire protection with a fire blanket and/or extinguisher.

Make sure everyone in the home knows what a smoke alarm sounds like! And if the smoke alarm goes off, follow these simple steps:

- Ensure that everyone leaves the building as soon as possible. Check all areas, make sure no one is left behind!
- Do not run and do not stop to collect your belongings except jacket and keys.
- If it is safe to do so, close all windows and doors as you escape to prevent the spread of fire.
- Call the fire brigade at SOS 112 (Norway 110)
- Smoke is the main cause of death from fires. If trapped inside the building, cover your mouth, conserve your breath and crawl near the floor to safety outside, never go back in if it's a fire.
- If possible try to limit or put out the fire, but do not risk your self or others life doing so.

Do not silence a smoke alarm until you know the cause of the alarm and when all occupants are safely outside the building!

Alarm maintenance

A regular program of smoke alarm maintenance will help to keep your smoke alarm in good working order.

- Test the smoke alarm weekly by means of the test button.
- Vacuum & wipe the smoke alarms with a damp cloth at least every 6th month.
- Do not paint or cover the smoke alarm except when performing dusty work, such as sanding ceilings, floors or walls.
- A smoke alarm is a sensitive life saving device.
- The life of this smoke alarm can be significantly reduced by failure to regularly clean and maintain it according to the instructions. Lack of reasonable care may also cause it to malfunction and will invalidate the warranty.

Battery replacement

- Always use fresh or new high quality AAA alkaline batteries.
- Remove the smoke alarm from the ceiling and replace the two batteries, note the correct polarisation.
- Refit the alarm to its position in the ceiling & test the unit, see **Testing the alarm** section.
- The life of all batteries can be significantly

shortened by long periods of storage or if in use at temperatures below 0°C or above 40°C.

- Batteries will also be drained by frequent or extended periods in a full alarm state, often caused by conditions such as cigarette smoke, steam, aerosol spray and condensation.

Troubleshooting

Note! All clicks or alarms are not an indication of battery failure, see below for all combinations.

Normal mode	Red LED Flashes every minute, no sound	
Full alarm indicating smoke or/and fire	Repeating series of 3 beeps every 4 seconds with flashing Red light	••• ••• •••
Low battery Level	Single click every minute + red LED flashes fast three times every 8th sec	• • •
Test button jammed	Repeating series of 5 beeps every 6th seconds with flashing Red light	••••• ••••• •••••
Fault in chamber/electronics or due to high humidity levels	Double click every minute + red LED flashes fast three times every 8th sec	•• •• ••

Inspect for obvious damage. Replace batteries, check that the smoke alarm has been installed in accordance with the instructions. In the case of repeated nuisance alarms, check that the smoke alarm is free from dust, cobwebs and external contamination from such things as cigarette smoke, drying paint, spray from household aerosols and steam. The later will shorten the life of the smoke alarm and invalidate the warranty. If so, replace the smoke alarm as soon as possible.

Hush (Pause)

False alarms created from non-emergency situations, for example from steam or candles, can be temporarily silenced by pressing the HUSH button on the smoke alarm. The red light will then flash every 8 seconds to remind you that the smoke alarm has been paused, the smoke alarm will automatically reset to surveillance mode after about 10 minutes.

Waste

Please dispose the smoke alarm at a recycling centre, approved by the municipality, after the product's lifetime has expired, note the date marking on the side of the smoke alarm, the smoke alarm must never be thrown in the household waste!

Product warranty

Deltronic Security AB (Deltronic) guarantees to you, as a purchaser, that the enclosed smoke alarm will be free from defects in material, workmanship or design under normal use and service for a period of **3 years**. This guarantee is not assignable and is not covering replaceable batteries. Our liability to you, under this guarantee is limited to repairing or replacing any part which we find to be defective in material, workmanship or design, free of charge to the customer, upon sending the alarm with proof of date of purchase, postage paid to the address stated below, if the unit has replaceable batteries remove them and enclose them please. The terms of this guarantee will not apply in the following circumstances: If the alarm has been modified, dismantled, contaminated, damaged, neglected or otherwise abused or altered following the date of purchase, or if it fails to operate due to incorrect siting, installation or damage caused by failure to abide by the instructions supplied. It is specifically drawn to the users attention that substantial periods in alarm will shorten the life of the smoke alarm, during which time the smoke alarm will have provided valuable protection, no claim under the guarantee will be entertained. The liability of **Deltronic**, arising from the sale of this alarm or under the terms of this guarantee shall not in any case exceed the cost of replacement of the smoke alarm. In no case, shall **Deltronic** be liable for consequential loss or damage resulting from the failure of the alarm or the breach of this or any other guarantee, express or implied or for damage caused by failure to abide by the instructions supplied. This guarantee does not affect your statutory rights.

Deltronic

For more information or if you have any questions, you are welcome to contact us on the below address:

Deltronic Security AB
EA Rosengrensgata 4
SE-421 31 Västra Frölunda
info@deltronic.se
www.deltronic.se
Tel: +46 (0)31-14 08 00

(Smoke Alarm for household or similar residential applications)

EN 14604:2005/AC:2008 1008-CPR-MC 69267308 DOP DS105 Deltronic 20240601	Operating temp: 0-40°C Operating humidity: ≈85%RH Sound level @ 3m: ≈85dBA
CE 24	Made in China for Deltronic Security AB Notified Body: 1008 (TUV)

